

Kenny McKenzie MRICS Chair of Building Control Professional Group

Developing professionals for Building Standards



What is RICS

RICS (Royal Institution of Chartered Surveyors) is an international professional body with over 100,000 members. We represent everything professional and ethical in land, property and construction.



Benefits of Membership

- 1. Status: Professional credentials that provide unrivalled client confidence**
- 2. Recognition: Standards in demand by governments and global markets**
- 3. Market advantage: Our global influence ensures members' professionalism is highly respected**
- 4. Knowledge: International practice standards, professional guidance and CPD**
- 5. Network: Over 100,000 RICS professionals worldwide**



Professional Groups Construction

1. Building Control
2. Building Surveying
3. Project Management
4. Quantity Surveying & Construction

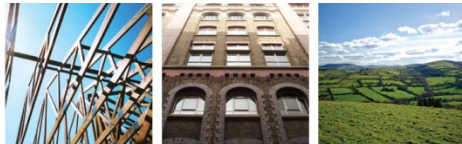


Membership Level

Student

RICS student membership can help you realise your potential and work to the highest standards at college or university.

Our study assistance, career support and networking opportunities will help you work your way toward chartered status.



Membership Level

Associate (AssocRICS)

Recognises the skills of individuals with relevant work experience and vocational qualifications. Providing a stepping stone to chartered status.



Membership Level

Member (MRICS)

Membership offers an internationally recognised professional qualification that will increase your status in your field of work. Membership is only awarded to individuals who are prepared to maintain exemplary standards, for the public advantage.



Associate by experience

10 Years relevant experience

1. Registration
2. Submission
3. Online ethics module
4. Assessment



Associate by Assessment

4 years relevant experience

1. Five technical competencies
2. One of the optional
3. Eight mandatory competencies



Member Graduate Route 1

1. RICS-accredited degree
2. 24 months' structured training
3. Final assessment submissions
4. Final assessment interview



Member Graduate Route 2

1. RICS-accredited degree & 5 years' relevant experience
2. 12 months' structured training
3. Final assessment submissions
4. Final assessment interview



Member Graduate Route 3

1. RICS-accredited degree & 10 years' relevant experience
2. Structured training not required
3. Final assessment submissions
4. Final assessment interview



Questions

<http://www.rics.org/uk/>

