

This certificate is valid for building regulations and associated technical guidance in force at the time of the registration and for the regulations in Scotland only

## SPS Envirowall Wall System 1 EWI – Mineral Fibre Insulation with Spar Dash Aggregate; Silicon or Brick Effect render finish – BBA REF: 05/4206 PS1

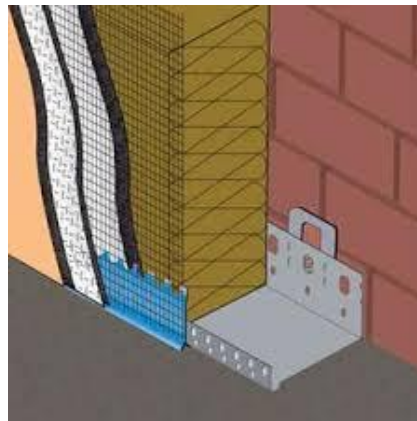
### Description of Product

Wall System 1 EWI is an external wall insulation system mechanically fixed to masonry / concrete walls (including no fines concrete). The system consists of Mineral Fibre insulation with a reinforced basecoat and Spar Dash Aggregate; Silicon or Brick Effect render finish.

SPS Envirowall Wall System 1 Mineral Wool has been considered for registration for both low-rise buildings (where no storey in a domestic building exceeds 18m above the ground or where the height of a non-domestic building does not exceed 18m) and high-rise domestic buildings with storey heights above 18m and non-domestic buildings with a height 18m and above.

Substrates applicable: Masonry, Brick(Solid), Brick (Cavity), Concrete, No-Fines Concrete, Existing Rendered Masonry, and Blockwork.

**OTHER NON- TRADITIONAL WALL TYPES ARE OUT WITH THE SCOPE OF THIS CERTIFICATE.**



### Key factors assessed

- Mechanical Resistance & Stability
- Safety in case of Fire
- Health, Hygiene and Environmental
- Safety in Use
- Energy, Economy and Heat Retention
- Durability serviceability and identification

### Validity

This certificate was first issued on 11 January 2018 and is valid until 10 January 2019  
Issue Date: 11 January 2018

## Scope of Registration

An insulation material for use on external walls.

SPS Envirowall Wall System 1 Mineral Wool has been considered for registration for both low-rise buildings (where no storey in a domestic building exceeds 18m above the ground or where the height of a non-domestic building does not exceed 18m) and high-rise domestic buildings with storey heights above 18m and non-domestic buildings with a height 18m and above.

The acceptance of the registered detail for any given project is also conditional on the wider suitability of the existing building to receive external wall insulation system. This suitability must be established by carrying out a thorough assessment of the building. This assessment must form part of the design and specification process to be carried out by SPS Envirowall or their approved contractors for the project, and if it identifies that the building is not suitable to receive the SPS Envirowall Wall System 1, then this Registered Detail should not be considered applicable.

## Conditions of Certificate

That this certificate refers only SPS Envirowall Wall System 1 Mineral Wool to be used for the Registered Detail

That any site-specific assessment, as referred to under the scope of registration above, shall take cognisance of the local wind loading parameters and any fixings must be designed to withstand such local conditions in every case. Proof of such wind effect assessments and conclusions must be provided by a qualified structural engineer when requested by the building standards verifier.

That a detailed fixings schedule should accompany any submission and a pull-out load/testing regime should be specified irrespective of SER Certification to confirm:

- BBA Certificate compliance;
- Pull out test results (each wall type);
- Detail types of fixings;
- Detail expansion joints

That an engineered approach is required for these installations.

That where no-fines concrete is subject to the application Structural Engineers input will be required to specify and confirm pull-out tests on a site-specific basis.

That the products used as components of the system shall be manufactured and installed strictly in accordance with the manufacturer's instructions, in accordance with the certificate holder's instructions and fully in accordance with the accredited certification and supporting test reports.

That the specifications and materials referred to have been assessed and approved in accordance with the Building (Scotland) Regulations 2004 and in accordance with the supporting guidance in the Domestic Technical Handbooks which came into force with effect from 1 July 2017

That where reference is made on a plan or specification document to any Code of Practice, British or European Standard or manufacturer's instruction it shall be construed as a reference to such publication in the form in which it is in force at the date of this registered detail.

That the materials specified shall not be changed without first gaining approval so to do. Failure to do so will invalidate the registered detail.

That this Registered Detail should not be regarded as a formal approval under the building warrant process prescribed by the Building (Scotland) Act 2003 enacted from 1 May 2005. It supports the site-specific building warrant submission required in every case.

## Regulations



LABSS consider that, SPS Envirowall Wall System 1 Mineral Wool, will meet the functional requirements of the Building Regulations (listed below) if the criteria detailed in this certificate are met.

### **The Building (Scotland) Regulations 2004 (as amended)**

Technical Handbooks – Domestic and Non-Domestic

#### **Regulation 8 Durability, workmanship and fitness of materials**

0.8.5: Ways of establishing the fitness of materials

#### **Regulation 9 Building Standards applicable to construction**

Construction shall be carried out so that the work complies with the applicable requirements of schedule 5.

#### **Mandatory Standard 1.1 Structure**

1.1.0 Introduction

1.1.1 General

1.1.2 Loading

1.1.3 Design and construction

Note: This standard is subject to site specific assessments and the acceptance of the registered detail for any given project must remain conditional on the wider suitability of the existing building and its environs, including local wind loadings and conditions, to receive the external wall insulation system. This suitability must be established by carrying out a thorough assessment of the building. This assessment must form part of the design and specification process to be carried out by SPS Envirowall or their approved contractors for the project, and if it identifies that the building is not suitable to receive the SPS Envirowall Wall System 1 Mineral Wool, then this Registered Detail should not be considered applicable.

#### **Mandatory Standard 2.1: Compartmentation; Mandatory Standard 2.2: Separation; Mandatory Standard 2.3: Structural Protection and Mandatory Standard 2.9: Means of Escape.**

Note: This certificate only covers this system as a fully adhered application and requires that cognisance is taken of the maintenance of fire resistant integrity at all separating / compartment wall / floor junctions and at protected zones around escape routes within buildings to meet the above Mandatory Standards

#### **Mandatory Standard 2.4 Cavities**

2.4.1 Cavity barriers

Note: This certificate only covers this system as a fully adhered application and as such no cavity will be created between the wall substrate and the cladding. This standard would apply only in the event of a physical cavity being created by the installation.

#### **Mandatory Standard 2.6 Spread to neighbouring buildings and Mandatory Standard 2.7 External cladding**

Note: This system has achieved a classification of A2-s1-d0 when tested in accordance with Classification of Reaction to Fire Performance BS EN 13501-1:2007+A1 2009 (reference Annex 2.B reaction to fire). This will meet the requirements of Mandatory Standard 2.6: Spread to Neighbouring Buildings and Mandatory Standard 2.7: External Cladding.

#### **Mandatory Standard 3.4 Moisture from the ground**

3.4.1 Treatment of building elements adjacent to the ground

Note: The system when constructed in accordance with the manufacturers specifications and instructions and in accordance with the scope and conditions of this registered detail will add to compliance with this standard.



### **Mandatory Standard 3.10 Precipitation**

3.10.1 General provisions

3.10.2 Wall constructions - solid

3.10.3 Wall constructions - cavity

Note: The system when constructed in accordance with the manufacturers specifications and instructions and in accordance with the scope and conditions of this registered detail will add to compliance with this standard.

### **Mandatory Standard 3.15 Condensation (Domestic)**

3.15.1 Condensation

3.15.5 Interstitial condensation

Note: The system when constructed in accordance with the manufacturers specifications and instructions and in accordance with the scope and conditions of this registered detail will add to compliance with this standard.

### **Mandatory Standard 4.1 Access to Buildings**

4.1.6 Width of accessible entrances

Note: The installation of this system should be carried out in such a way as not to adversely affect compliance with this standard.

### **Mandatory Standard 6.2**

6.2.0 General

6.2.11 Alterations to the insulation envelope

Note: The system when constructed in accordance with the manufacturers specifications and instructions and in accordance with the scope and conditions of this registered detail will add to compliance with this standard.

### **The Building Regulations 2010 (as amended) England & Wales**

#### **The Building Regulations 2010 (as amended) England**

If you would like to discuss a specific use of the product in England it will require an additional assessment under the English Building Regulations and accordingly you should contact the LABC

#### **The Building Regulations 2010 (as amended) Wales**

If you would like to discuss a specific use of the product in Wales it will require an additional assessment under the Welsh Building Regulations and accordingly you should contact the LABC Cymru

## Supporting Information

All supporting information to this certificate can be supplied by the manufacturer / installer and includes these primary documents:

- 982 SPS Envirowall Report 355643 -A2 s1 d0 Classification of Reaction to Fire
- 985 SPS Envirowall BBA Certificate 05-4206 PS1 Mineral Wool
- SPS Envirowall standard drawings and details
- SPS Envirowall General Specification
- U-Value calculations
- Condensation Risk analysis

Additional information is available to verifiers on the LABSS Website - <https://www.labss.org/members/open-registered-details-applications/labssrd23emw-warmworks-sps-envirowall-wall-system-1-ewi>

## Contact Information

SPS Envirowall Ltd., 25 / 26 Rosevale Road, Parkhouse Industrial Estate West  
Newcastle Under Lyme ST5 7EF  
Email: [Kevin.mangan@spsenvirowall.co.uk](mailto:Kevin.mangan@spsenvirowall.co.uk) Tel: 0845 130 0983

Local Authority Building Standards Scotland: [www.labss.org](http://www.labss.org)

THIS PAGE IS INTENTIONALLY BLANK