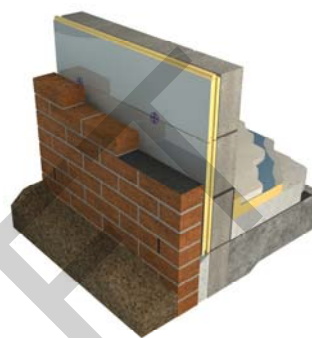


This certificate is valid for Building Regulations & associated technical guidance in force on the date of registration and for the regulations in the countries indicated

Eco-Cavity Full Fill Cavity Wall Insulation

Description of Product

This is an assessment of EcoTherm Eco-Cavity full fill rigid board insulation that is designed to be used for full fill cavity wall insulation. The product is manufactured in thicknesses ranging from 50mm up to 150mm and has a thermal conductivity of 0.022 W/m²K and is manufactured with a blowing agent that has zero depletion potential and low global warming potential. The board comprises a fibre free rigid polyisocyanurate (PIR) insulation core with aluminium foil composite facing on both sides. The tongue and groove edges ensure a continuous layer of insulation which increases protection from wind driven rain and also aids installation. The boards are sized to co-ordinate with standard brick and block dimensions allowing insertion of wall ties into the construction at the appropriate spacing. The product is a closed cell structure, is safe to install and resists moisture penetration. It also has a compressive strength exceeding 140kPa when tested to BS/IS. EN 826: 1996.



Key Factors Assessed

- Mechanical Resistance & Stability
- Safety in case of Fire
- Health, Hygiene and Environmental
- Safety in Use
- Energy Economy and heat retention
- Durability serviceability and identification

Validity

This certificate was first issued on 15th March 2017 and is valid until 15th March 2018.

Issue Dated 15th March 2017

Scope of Registration

The EcoTherm Cavity Insulation board is designed for use in masonry cavity walls with a 10mm residual cavity. It can be used in buildings up to heights of 25m for both residential and commercial properties.

Where the walls of a building are over 12m and up to 25m then maximum the height of continuous cavity must not exceed 7 metres, therefore cavities should be broken by formation of a continuous horizontal cavity tray and weep holes discharging to the outside.

When the product is used in situations where it bridges a dpc in walls, dampness from the ground will not pass through to the inner leaf provided the cavity wall is detailed correctly.

The tongue and groove edges of the board help increase protection from wind driven rain, the board may be used in any exposure zone of the UK provided the appropriate construction, external finish or facing masonry and joints are carried out.

Conditions of Certificate

The product is approved for use in walls up to 25m maximum height, where the walls of a building are over 12m and up to 25m then maximum the height of continuous cavity must not exceed 7 metres, therefore cavities should be broken by formation of a continuous horizontal cavity tray and weep holes discharging to the outside.

The board joints must be installed correctly to ensure interlock of the tongue and grooved edges.

Plastic spacers are provided on the cavity wall ties and after raising each section of inner leaf, before installation of the insulation board, excess mortar should be removed and mortar droppings cleaned from exposed edges of the installed insulation boards. The use of a cavity batten or cavity board is recommended to protect board edges and maintain a clear cavity. Plastic wall tie spacers must be installed to ensure the 10mm cavity is maintained.

There should be close site supervision of the board installation due to the slim 10mm residual cavity, control of mortar is required to ensure cavity widths and tie placement are at a constant, plastic clips are also required to the wall ties to ensure the board is held back against the inner leaf. After raising each section of inner leaf, before installation of the insulation board, excess mortar should be removed and mortar droppings cleaned from exposed edges of the installed insulation boards. The use of a cavity batten or cavity board is recommended to protect board edges and maintain a clear cavity.

A 10mm residual cavity must be maintained between the inner face of outer leaf and the outer face of the insulation board.

Some very severe exposure zones may require additional measures so checks must be made with the relevant local authority and LABC Warranty for acceptance before building works commence.

For Scotland purposes:

The specifications and materials referred to have been assessed in accordance with the Building (Scotland) Regulations 2004 and in accordance with the supporting guidance in the Domestic Technical Handbooks which came into force with effect from 1 June 2016.

Where reference is made on a plan or specification document to any Code of Practice, British or European Standard or manufacturer's instruction it shall be construed as a reference to such publication in the form in which it is in force at the date of this Registered Detail.

The materials specified shall be for purposes of this Registered Detail and should not be changed without first gaining approval so to do from Local Authority Building Standards Scotland [LABSS]. Failure to do so will invalidate the Registered Detail.

The Registered Detail shall be valid for a period of 12 months from the date of issue or until otherwise invalidated by formal notice by LABSS. The Registered Detail may be re-validated after 12 months following a request and payment of an annual renewal fee from the Registered Detail Holder.

This Registered Detail should not be regarded as a formal approval under the building warrant process prescribed by the Building (Scotland) Act 2003 enacted from 1 May 2005

This Registered Detail shall contribute to compliance with relevant Mandatory Standards specified under the Building (Scotland) Regulations 2004 as amended when read with the scope, conditions and regulations sections to this Registered Detail.



LABC and LABSS consider that, Eco-Cavity Full Fill Cavity Wall Insulation will meet the functional requirements of the Building Regulations (listed below) if the criteria detailed in this certificate are met;

The Building Regulations 2010 (as amended) England & Wales

| | |
|--------------|---|
| Regulation 7 | Materials and workmanship |
| Note: | The product is acceptable. |
| AD A | Loading |
| Note: | The product is acceptable as per the conditions detailed above. |
| AD B | Fire Safety |
| Note: | The product is acceptable. |
| AD C | Site preparation and resistance to contaminants and moisture |
| Note: | The product is acceptable as per the conditions detailed above. |
| AD L1A | Conservation of fuel & power - New Dwellings |
| Note: | The product is acceptable. |



The Building Regulations 2010 (as amended) England

| | |
|-----------------|---|
| AD B | Fire Safety |
| Comment: | Dependant on type of deck and waterproofing membrane. |
| Regulation: L1A | Conservation of fuel and power. |
| Comment: | The product is acceptable. |



The Building Regulations 2010 (as amended) Wales

| | |
|-----------------|---|
| AD B | Fire Safety |
| Comment: | Dependant on type of deck and waterproofing membrane. |
| Regulation: L1A | Conservation of fuel and power. |
| Comment: | The product is acceptable. |



The Building (Scotland) Regulations 2004 (as amended)

Technical Handbooks Domestic and Non-Domestic

| | |
|-----------------|--|
| Regulation 8(1) | Durability, workmanship and fitness of materials |
| 0.8.5: | Ways of establishing the fitness of materials |

| | |
|-----------------|---|
| Regulation 9 | Building Standards applicable to construction |
| Note: | Construction shall be carried out so that the work complies with the applicable requirements of schedule 5. |
| Mandatory | |
| Standard 3.4 | Moisture from the ground |
| Note: | The product can contribute to a construction satisfying this standard, with reference to clause 3.4.1 of the domestic and non-domestic technical handbooks. |
| Mandatory | |
| Standard 3.10 | Precipitation |
| Note: | The product can contribute to satisfying this standard, with reference to clause 3.10.1 of the domestic and non-domestic technical handbooks. |
| Mandatory | |
| Standard 3.15 | Condensation |
| Note: | The product can contribute to satisfying this standard, with reference to clauses 3.15.1, 3.15.4 and 3.15.5 of the domestic and non-domestic technical handbooks. |
| Mandatory | |
| Standard 6.1(b) | Carbon Dioxide Emissions |
| Note: | The thermal insulation performance of this product should be considered in the context of the contribution made to the overall performance of the building. |
| Mandatory | |
| Standard 6.2 | Building Insulation Envelope |
| Note: | The thermal insulation performance of this product should be considered in the context of the contribution made to the overall performance of the building. |

Non-Regulatory Information



LABC Warranty

Pending assessment.

Supporting Documentation

BBA Agreement Certificate 14/5157 Product Sheet 4

EcoTherm Eco Cavity Full Fill Insulation Data Sheet

EcoTherm Product Safety Information Issue 5 Oct 2016

DRAFT

Contact Information

EcoTherm® Insulation (UK) Ltd
Harvey Road
Burnt Mills Industrial Estate
Basildon
Essex
SS13 1QJ
Tel: 01268 597213
Email: technical@ecotherm.co.uk
Web: www.ecotherm.co.uk

DRAFT